



Office of the Information Commissioner
Queensland



intersticia
analogue leadership in a digital world

Government in the age of the “Social Machine”

2014 Solomon Lecture

A black and white close-up portrait of T.S. Eliot, looking slightly to the right with a thoughtful expression. The image is the background for the entire slide.

T.S. Eliot

Where is the
knowledge we
have lost in
information?

1714 - the Longitude Act



1814 - Australia's first official currency



1914 – Commencement of WW1



Blood Swept Lands and Seas of Red



The Western Front

An aerial photograph of a landscape, likely a battlefield or a lunar surface, characterized by numerous craters and a prominent linear feature running diagonally across the center. The terrain is dark and textured, with lighter patches indicating craters or other geological features. In the top right corner, there is some faint, illegible text that appears to be a date stamp: "SEP 19 1918".

One of the largest man made
structures on earth

1914 - The birth of ANZAC



1989 -Information Management: A proposal

CERN DD/OC
Information Management: A Proposal

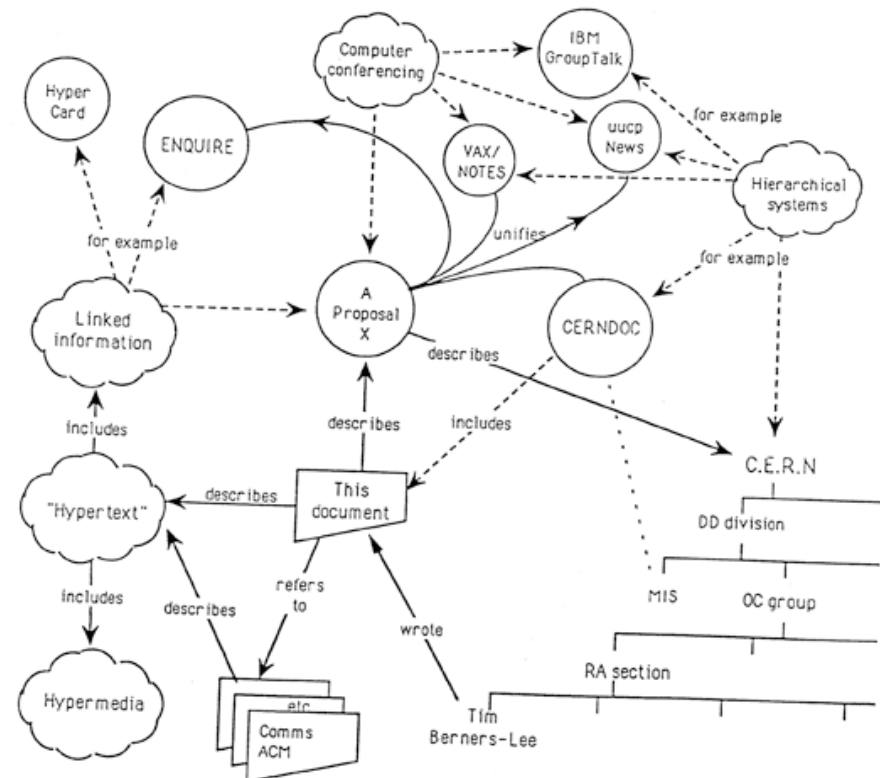
Vague but exciting ...
Tim Berners-Lee, CERN/DD
March 1989

Information Management: A Proposal

Abstract

This proposal concerns the management of general information about accelerators and experiments at CERN. It discusses the problems of loss of information about complex evolving systems and derives a solution based on a distributed hypertext system.

Keywords: Hypertext, Computer conferencing, Document retrieval, Information management, Project control



1989 – birth of the World Wide Web



the largest “information construct”
in human history

2014 - EU “Right to be forgotten”



2014 - Teaching coding in schools



- By September coding will be mandatory in British schools



- The UK government has ordered coding become compulsory for every child aged 5-16 years old



ALL IS INFORMATION ...

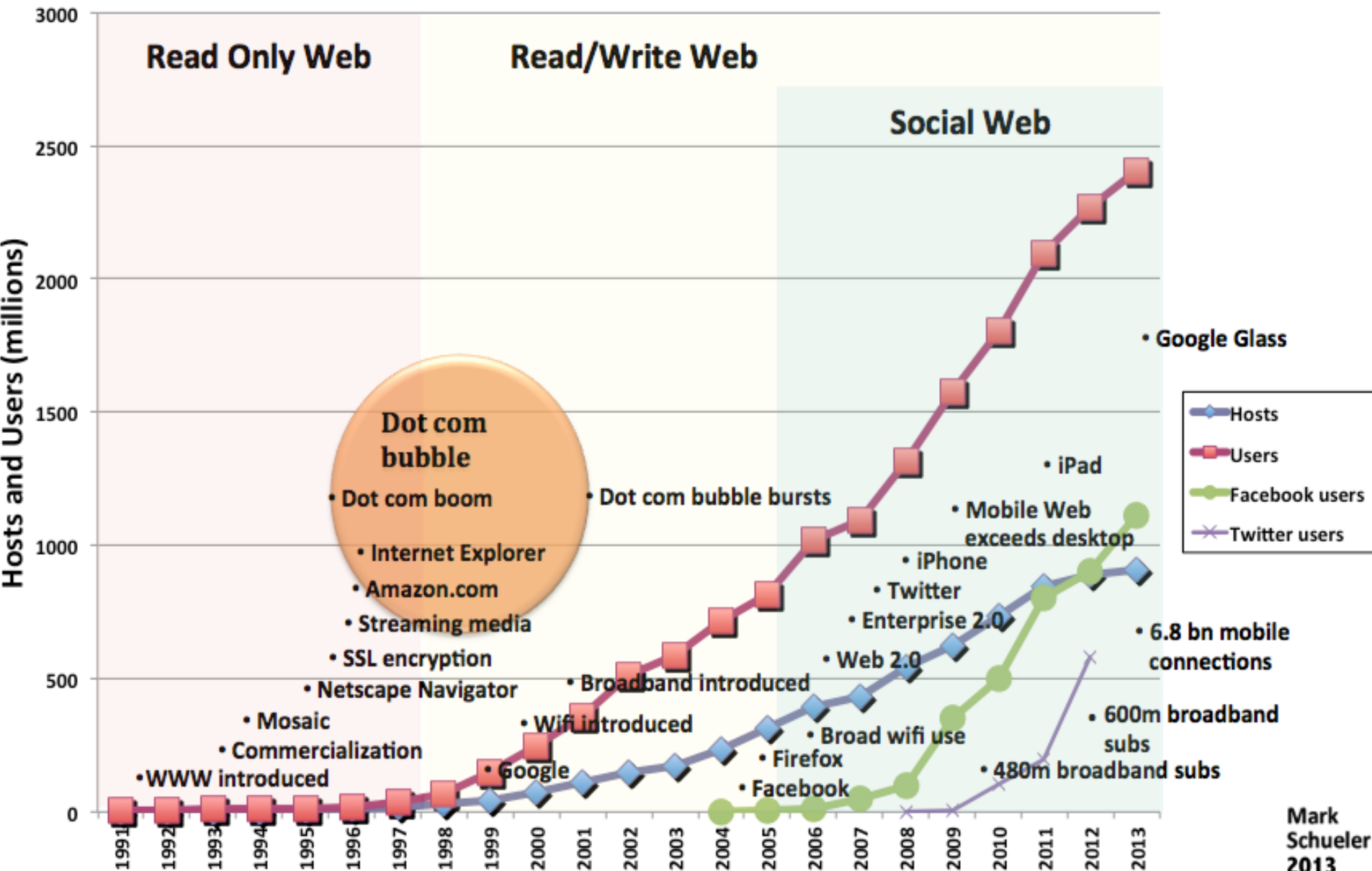
- as navigation and survival
- as currency
- as power and conflict
- as a way to connect
- as empowerment
- as a fundamental literacy

Arthur C. Clarke

Any sufficiently
advanced
technology is
indistinguishable
from magic



Internet Growth - Usage Phases - Tech Events

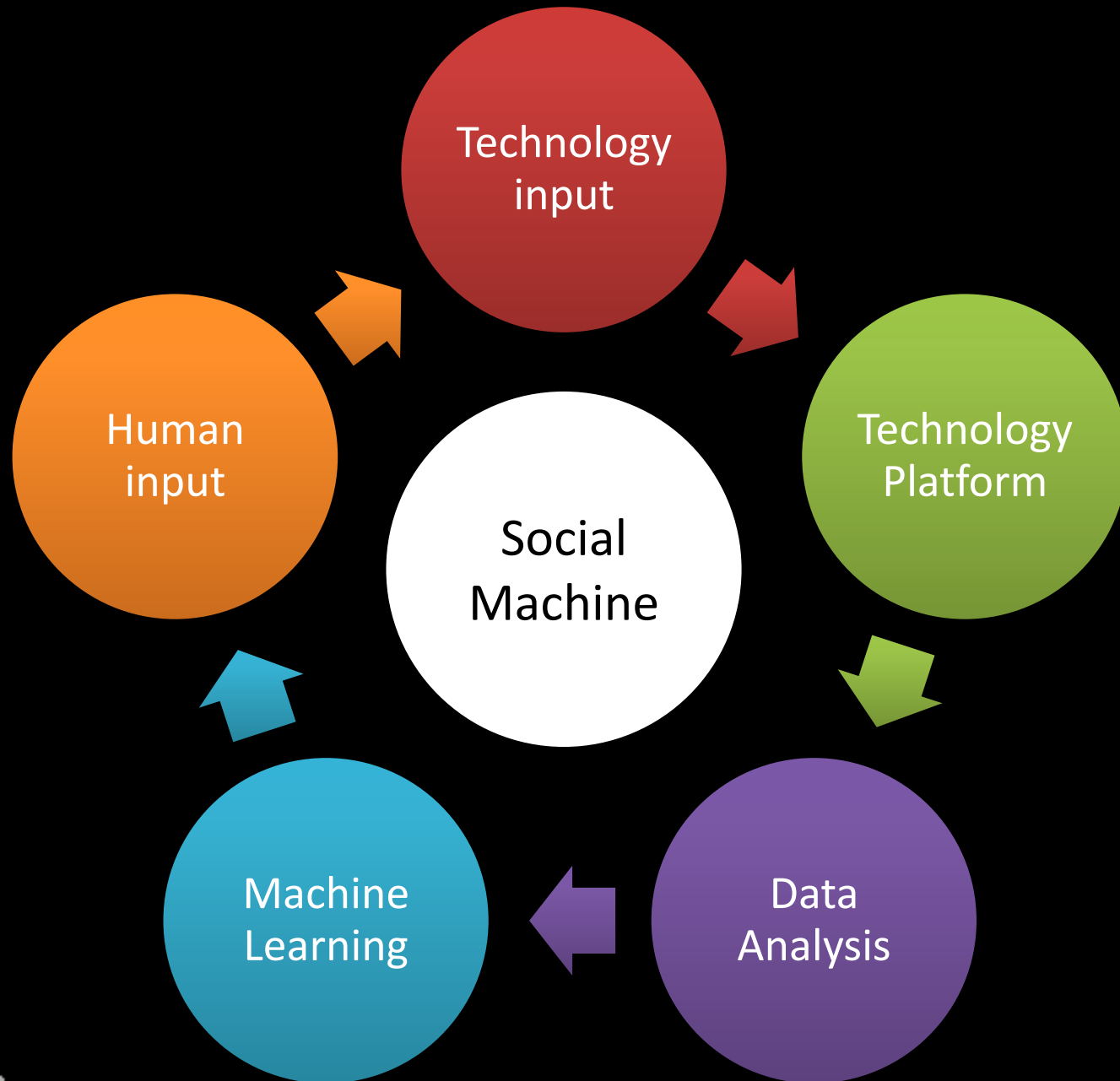


Note – events shown relate to the time axis only.

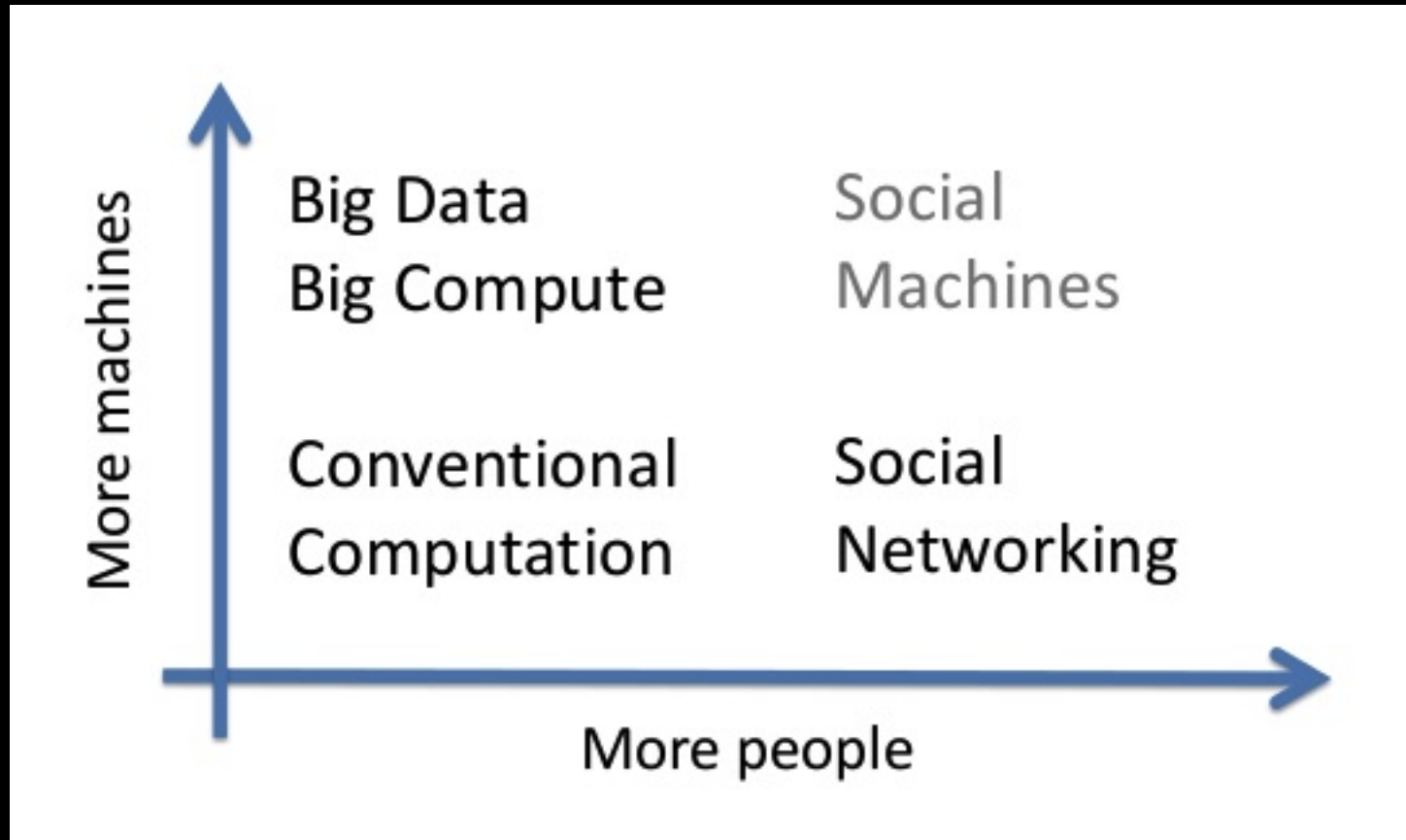
Mark
Schueler
2013



Real life is, and must be, full of all kinds of social constraint – the very processes from which society arises. Computers can help if we use them to create abstract social machines on the Web: processes in which the people do the creative work and the machine does the administration. ... The stage is set for an evolutionary growth of new social engines



The rise of the Social Machine



Characteristics of the social machine



“Nobody knows everything, but everyone knows something”

1. problems are beginning to be solved by **very large scale human participation via the Web**
2. there is access to, or the ability to generate, **large amounts of relevant data using open data standards**
3. there is **increasing confidence in the quality** of the data, and
4. human-computer **interfaces are becoming far more intuitive** and seamless

Early social machines



tumblr.



facebook

Linked in

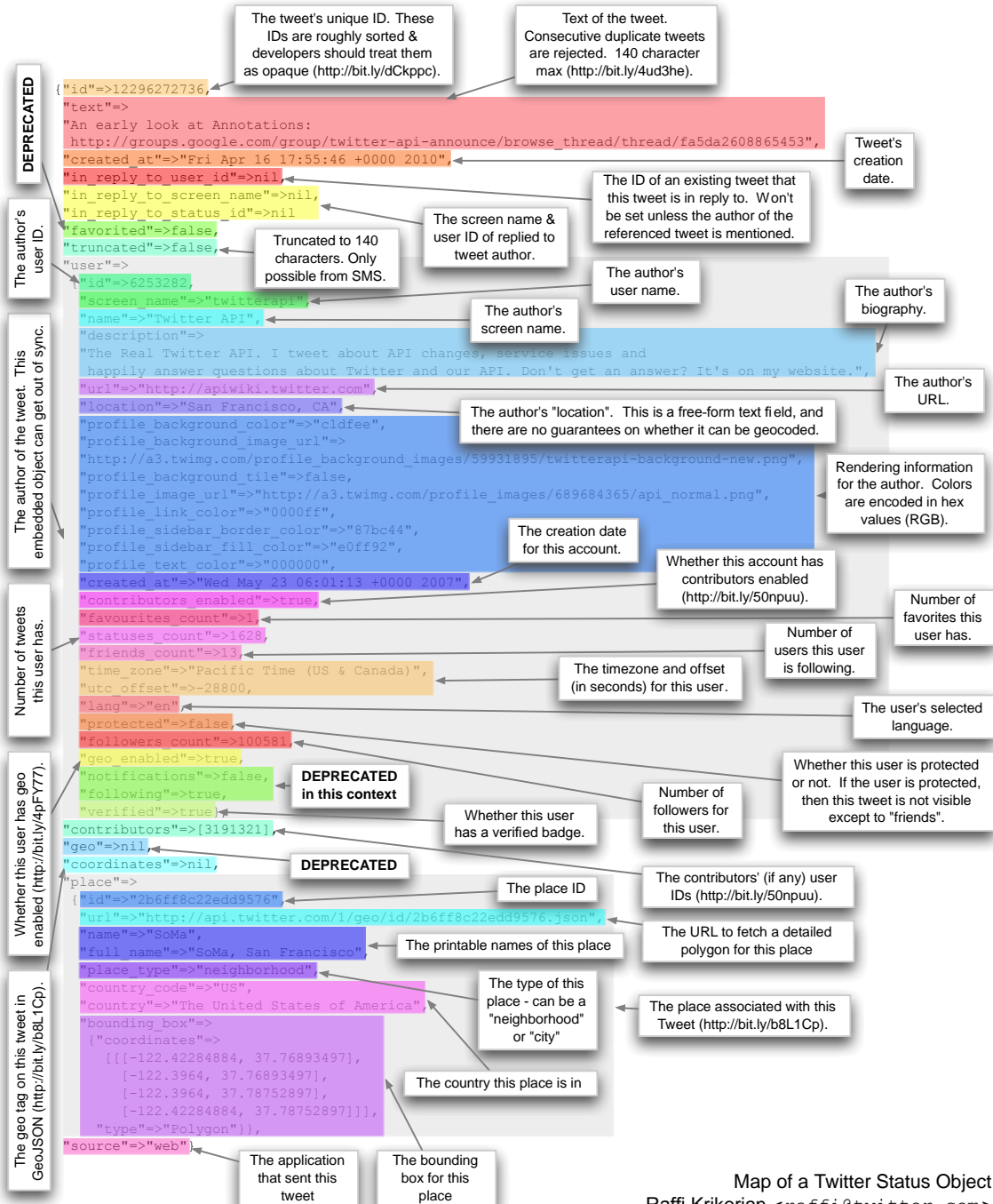


ebay

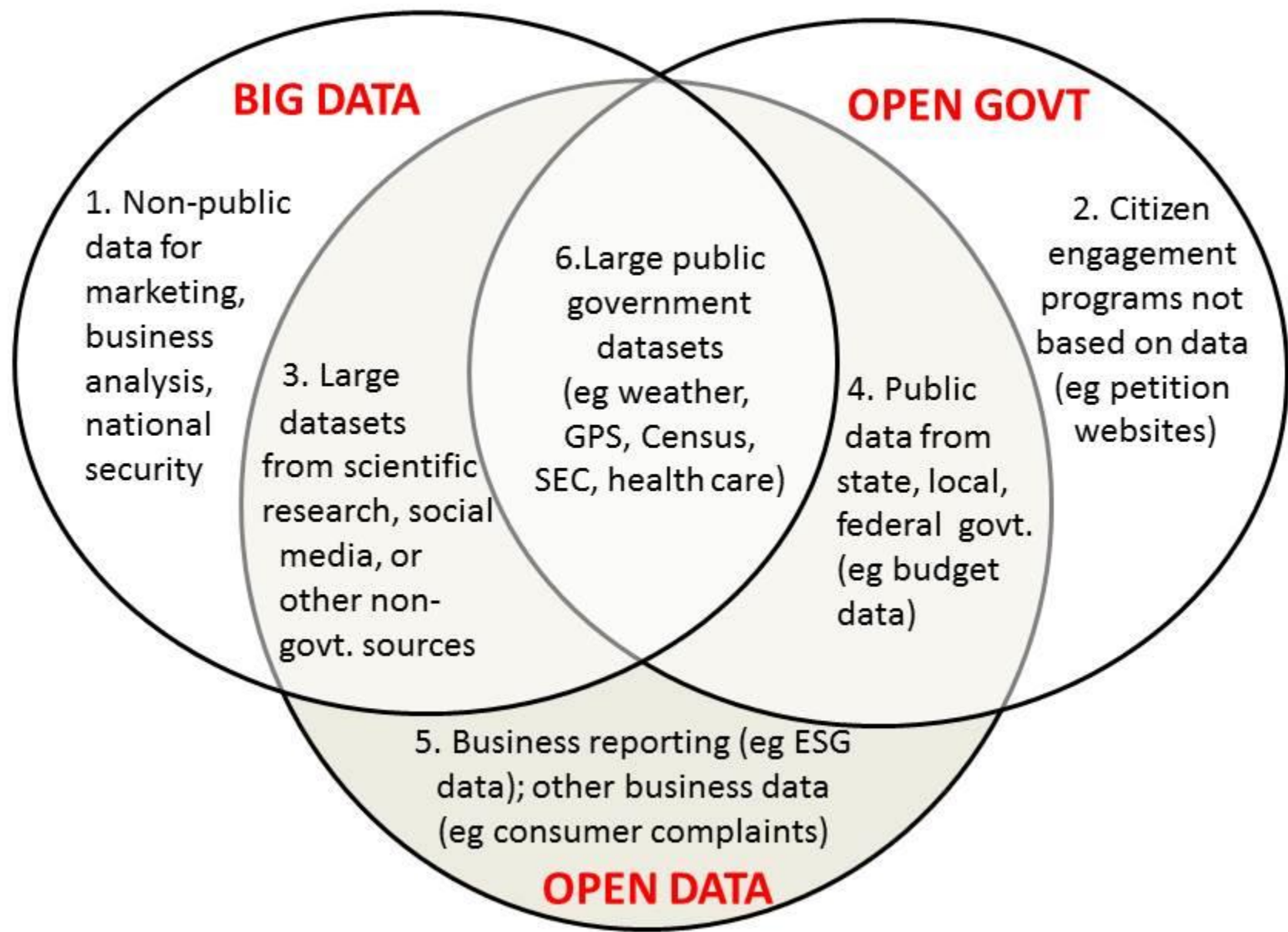
GALAXY ZOO



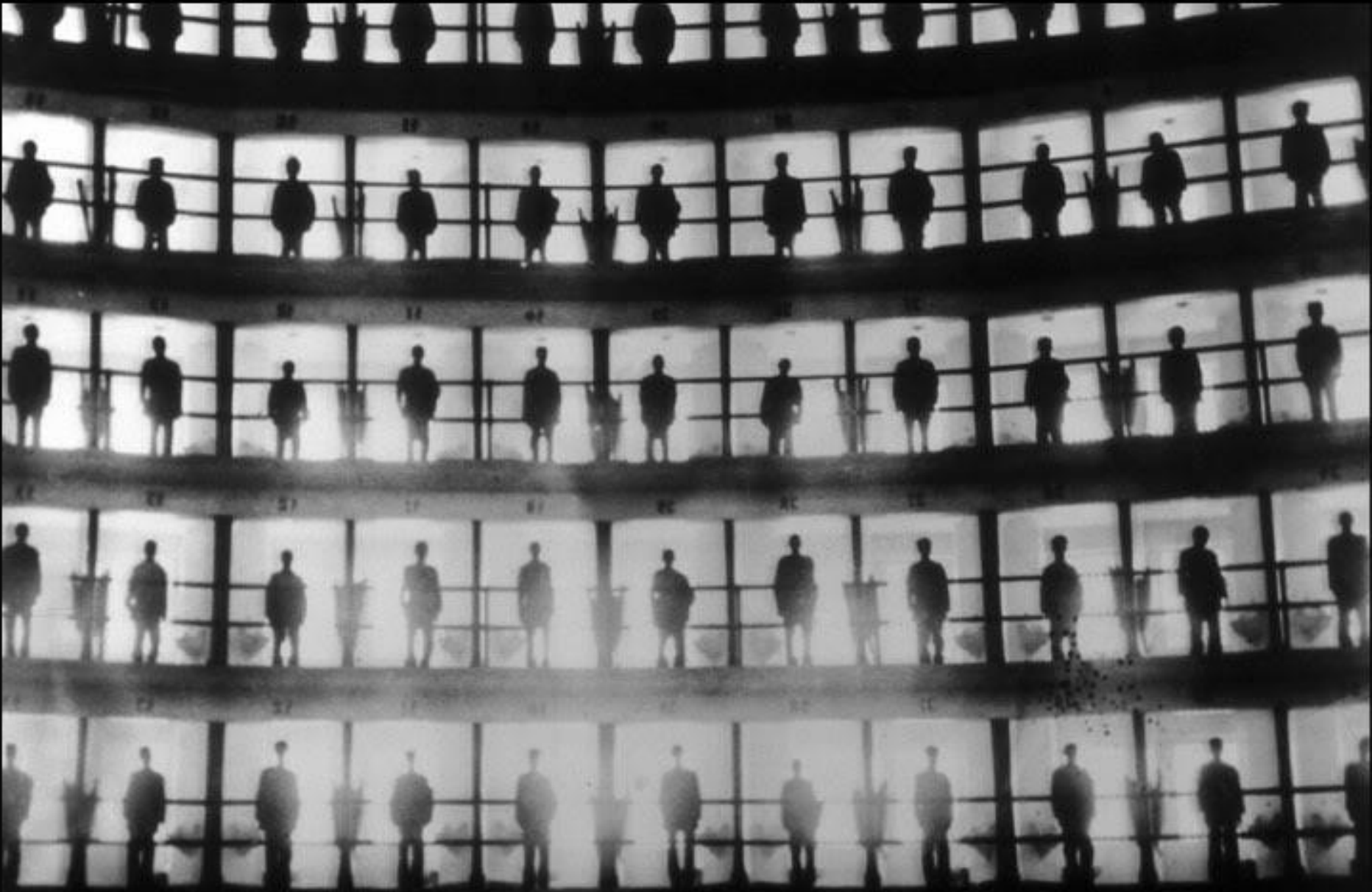
The common Tweet







Welcome to life in the panopticon



Web Science

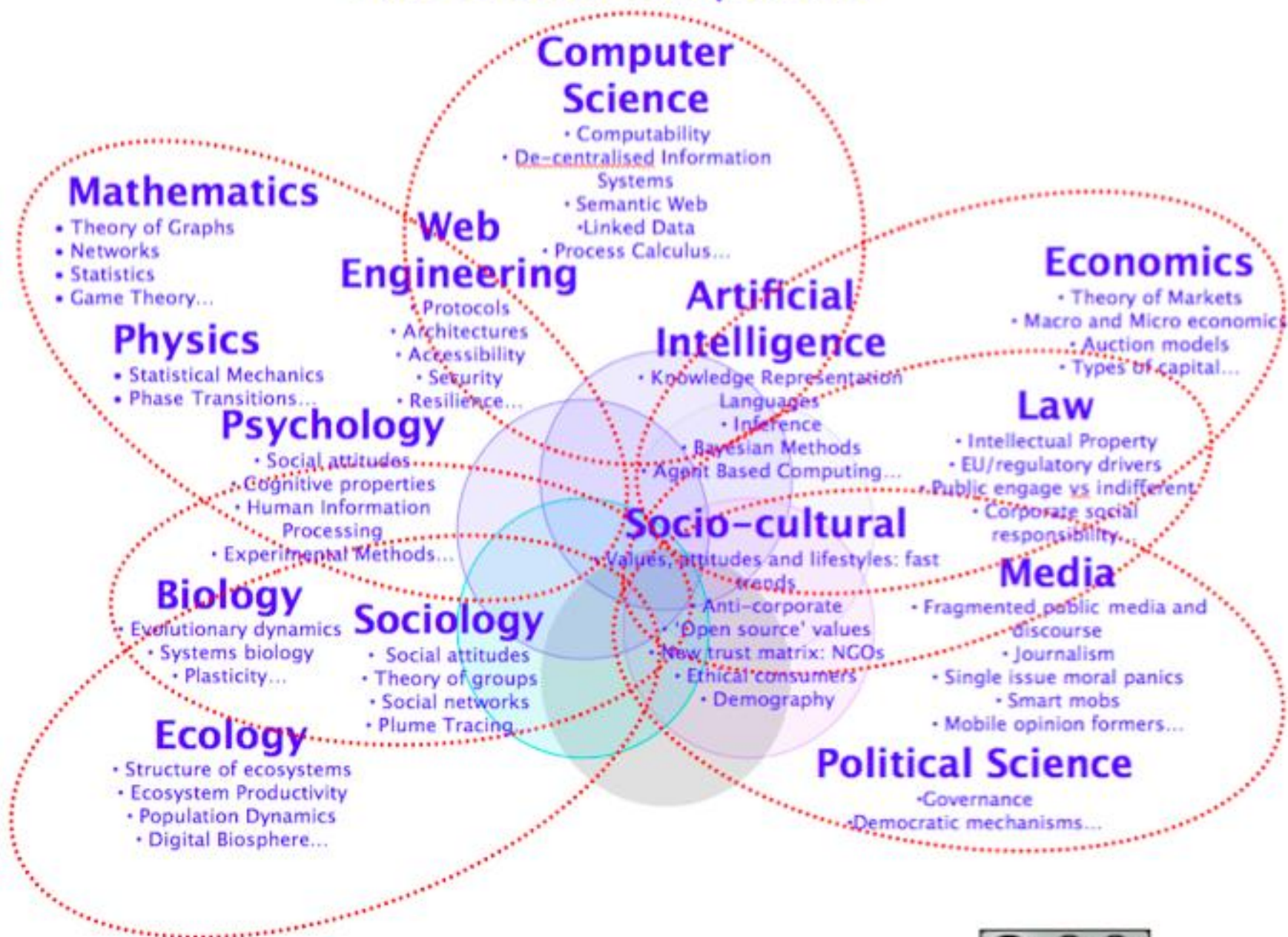
The theory and practice of social machines



An emerging discipline which aims to understand the deeper structure of the social Web and how people are using it, not only now, but potentially in the future.



Web Science: Components



The Web Science community



www.sociam.org



SOCIAM

Social Machines



Purposeful Human Interaction on the Web

Research into methods of supporting purposeful human interaction on the Web. [Read more](#)



The Web of Observatories

- to understand web evolution through
- observation
- experimentation



The Web of Observatories



Web Observatory beta Home About Contact Quick Menu Sign in

Southampton Web Observatory

This is the data portal for the Southampton and SOCIAM Web Observatory

Datasets

A page containing information regarding various datasets gathered

[View details >](#)

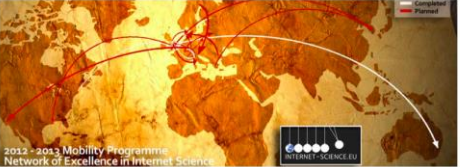
Visualisations

A page containing various data visualisations

[View details >](#)

EINS Portal alpha Home About EINS Contact Quick Menu Sign in

EINS-Internet Science Evidence Base



2012 - 2013 Mobility Programme
Network of Excellence in Internet Science

Datasets

A page containing information regarding various datasets gathered

[View details >](#)

Tools

Tools for experiment repetition, data collection, data analysis, data publishing, quality assessment of experimental results, etc.

[View details >](#)

e-Infrastructures

A page containing examples of e-infrastructures

[View details >](#)

Web Observatory A Home Datasets Visualisations Sign in

III TB Web Observatory

Datasets

A page containing information regarding various datasets gathered

[View details >](#)

Visualisations

A page containing various data visualisations

[View details >](#)

[Contact](#) [Issues](#)

Tetherless World Constellation Rensselaer

Navigation

- TWC Home
- RPI Home
- WSTNet at RPI: WSRC
- Demos
- TWed
- People
- Events
- Courses/Classes
- News/Announcements
- Research Areas
- Projects
- Publications
- Presentations
- Concepts
- Weblog
- About TWC
- Open Positions/Internships
- Help

TWC Web Observatory Portal

[View](#) [View Source](#)

About the TWC Web Observatories

As part of the Web Science Trust, the Web Science Research Center at RPI is dedicated to the development and promotion of Web Observatories. What is a Web Observatory? We define it as: "A global data resource for the advancement of economic & social prosperity." The goal is to mobilize a research community that leverages the strengths of multiple disciplines, methodologies, and theoretical frameworks.

At the WSRC, we've identified four central themes - social spaces, health and wellness, scientific and environmental data and open government - of which we've developed frameworks, processes and tools to aid in research and discovery. These four speak to a growing interest in each of these research areas and to where the collection and analysis of data has scaled significantly thanks to the Web.

This is a work in progress. We hope the tools, publications, projects and data will enable further sharing and collaboration with other researchers interested in these areas across the Web.

Social Spaces Web Observatory

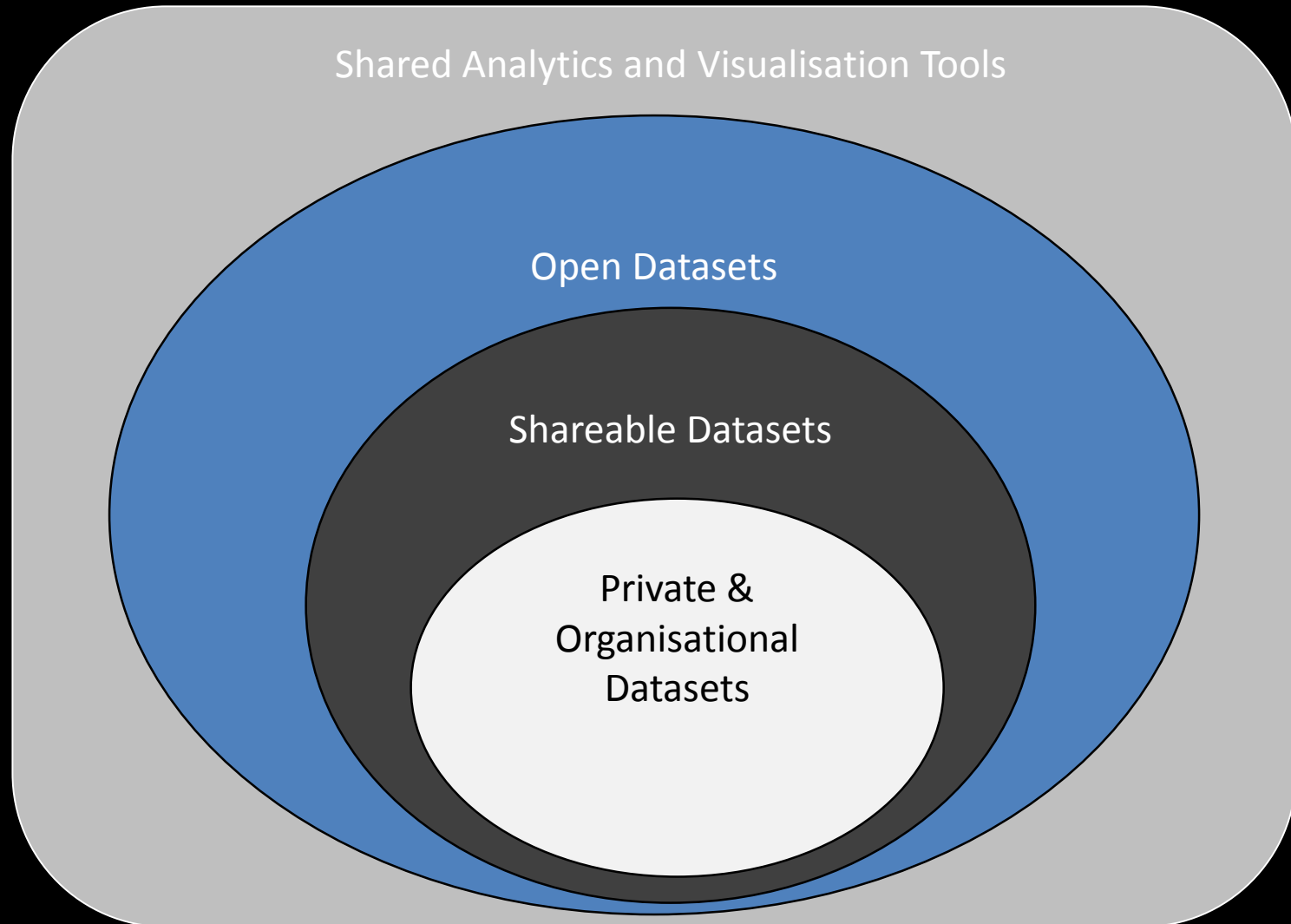
The social media phenomena and its impact on our contemporary daily lives is of growing interest for

Health and Life Sciences Web Observatory

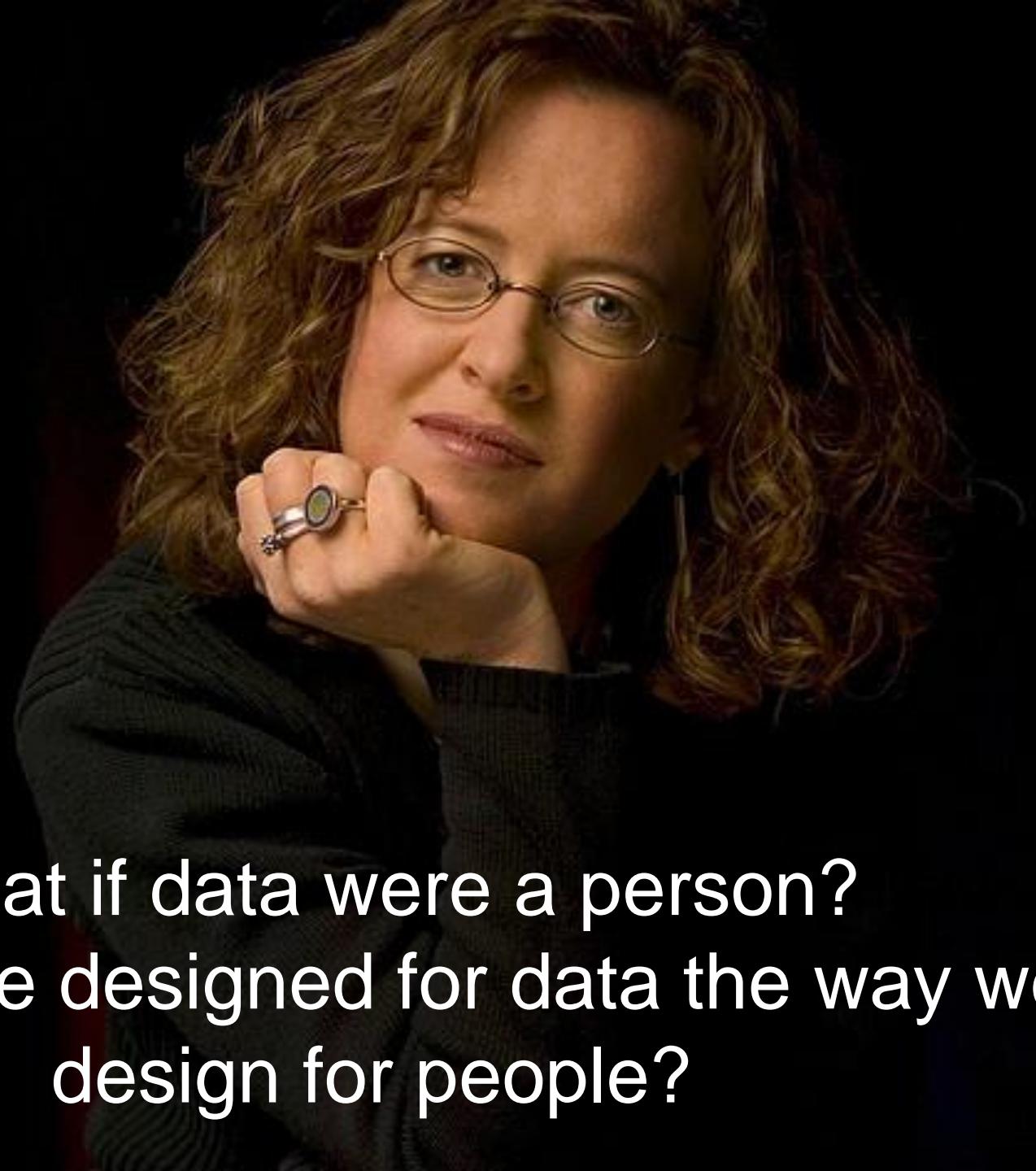
As the demand by both the private and public sectors grows for value added information services, we at RPI

Web
Observatory

Levels of Sharing



Genevieve Bell



What if data were a person?
What if we designed for data the way we
design for people?



Governments need information to govern
Citizens need information to hold government to account

Brendan O'Connor OAlC Conference, November 2011

Government is, at bottom, a mechanism for collective action. Government 2.0 is the use of technology ... to better solve collective problems at a city, state, national, and international level

A black and white portrait of Tim O'Reilly, a man with a beard and mustache, looking slightly to the left. The image is in the background of the slide.

Tim O'Reilly

Welcome to GOV.UK

The best place to find government services and information
Simpler, clearer, faster



Popular on GOV.UK

[Universal Jobmatch job search](#)

[Get a car tax disc](#)

[Log in to student finance](#)

[Book your theory test](#)

[Employment and Support Allowance](#)

Services and information

[Benefits](#)

Includes tax credits, eligibility and appeals

[Disabled people](#)

Includes carers, your rights, benefits and the Equality Act

[Housing and local services](#)

Owning or renting and council services

[Births, deaths, marriages and care](#)

Parenting, civil partnerships, divorce and Lasting Power of Attorney

[Driving and transport](#)

Includes car tax, MOT and driving licences

[Money and tax](#)

Includes debt and Self Assessment

[Business and self-employed](#)

Tools and guidance for businesses

[Education and learning](#)

Includes student loans and admissions

[Passports, travel and living abroad](#)

Includes renewing passports and travel advice by country

[Citizenship and living in the UK](#)

Voting, community participation, life in the UK, international projects

[Employing people](#)

Includes pay, contracts and hiring

[Visas and immigration](#)

Visas, asylum and sponsorship

[Crime, justice and the law](#)

Legal processes, courts and the police

[Environment and countryside](#)

Includes flooding, recycling and wildlife

[Working, jobs and pensions](#)

Includes holidays and finding a job

This website replaces





Data Indonesia dalam satu portal

Temukan data-data berbagai sektor instansi pemerintahan
yang dapat anda gunakan secara bebas

TOPIK



Ekonomi dan Keuangan



Pendidikan



Kependudukan dan
Ketenagakerjaan



Energi dan Sumber
Daya Alam



Kesehatan



Pengadaan

Blog

Open Data: Potential Source for
National Empowerment >>

Laporan Implementasi Gerakan Open
Government Indonesia 2013 >>

Featured

Bank Indonesia

Belanja Pemerintah Indonesia Berdasarkan APBN

Pemerintah Kabupaten Bojonegoro: 117 Dataset

Statistik

700 dataset
24 instansi
14 grup





Queensland Government

For Queenslanders

Business and industry

Contact us

Search website



Queensland Government home

Search

Search website e.g. holidays



Popular questions

I want to...

View all

Find a department

Renew my registration—vehicle and vessel

Renew my driver licence

Register my pool or spa

Change my address—driver licence

Apply for a Seniors Card

Get a camping permit

Pay a camera-detected infringement notice

Search for grants

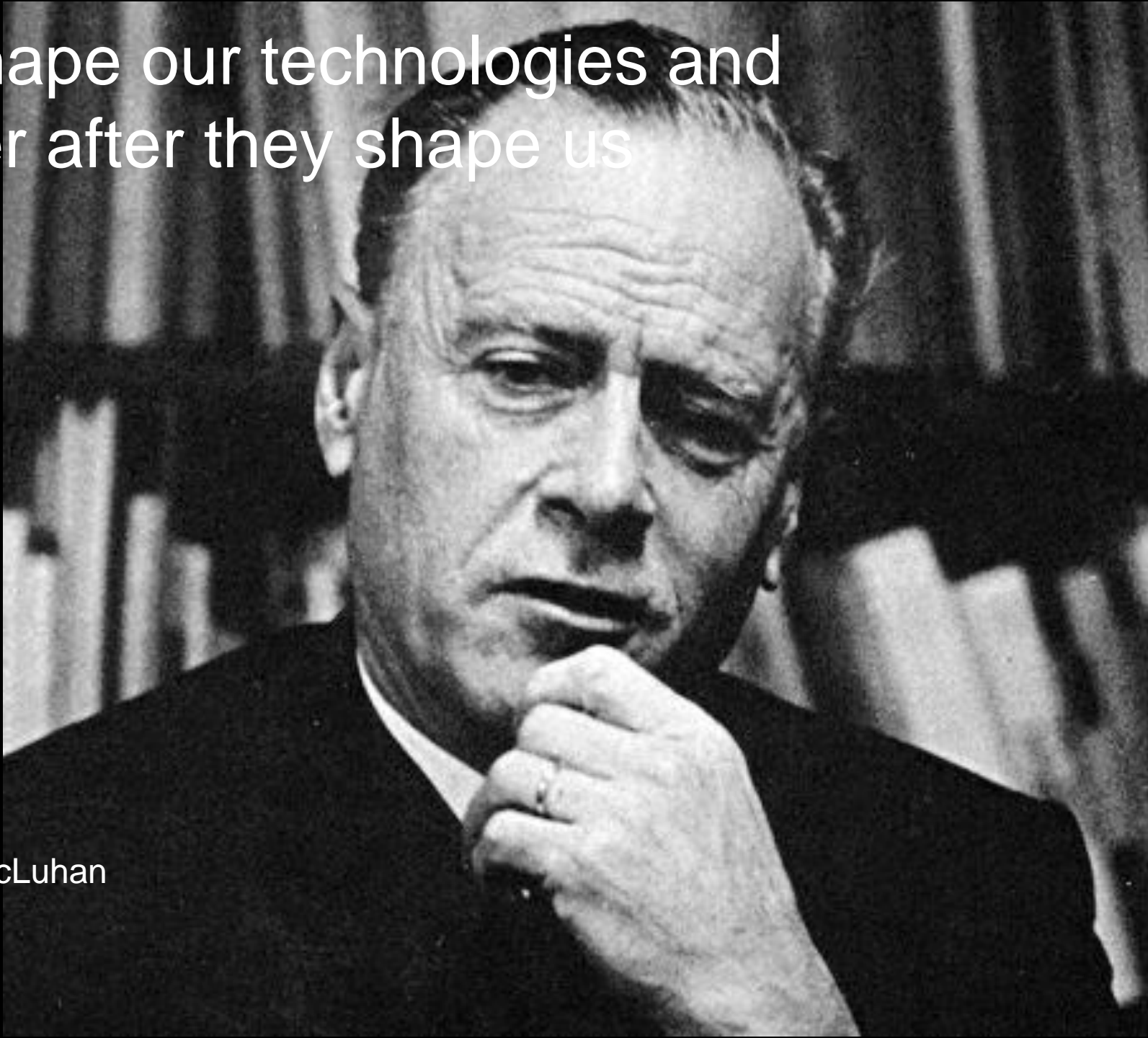
Search for government jobs and careers

Find Queensland Government gazettes

Find government data



We shape our technologies and
forever after they shape us



Marshall McLuhan



coursera

Courses Specializations **New** Institutions About ▾ | Sign In Sign Up

Take the world's best courses, online, for free.

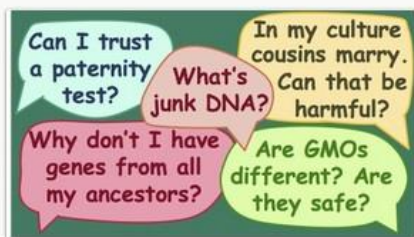


Join 6,318,070 Courserians.

Learn from 596 courses, from our 108 partners.

[How it works »](#)

Pennsylvania State University »



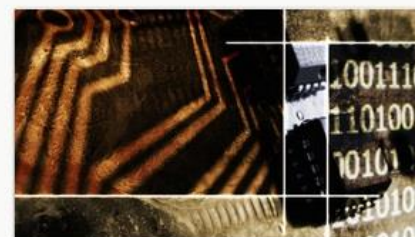
Useful Genetics Part 2

The University of British Columbia, Jan 3rd
Taught in English



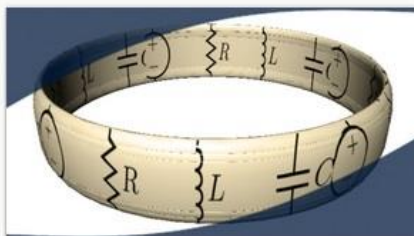
Drugs and the Brain

California Institute of Technology, Jan 4th
Taught in English



Information Theory

The Chinese University of Hong Kong, Jan 6th
Taught in English



<https://www.casseroleclub.com/>



[HOW IT WORKS](#)

[SIGN IN](#)

Home-cooked food made by neighbours for neighbours.

Forget takeaways — Enter your postcode and find neighbours cooking delicious meals

Enter your postcode

Find

Or [SIGN UP](#) now to get cooking

[FAQ](#) [Blog](#) [Terms](#) [About](#)

Any questions? ☎ 0203 286 8911 ✉ hello@casseroleclub.com



Punggol Northshore district, Singapore



A Government Web Observatory



Research Questions

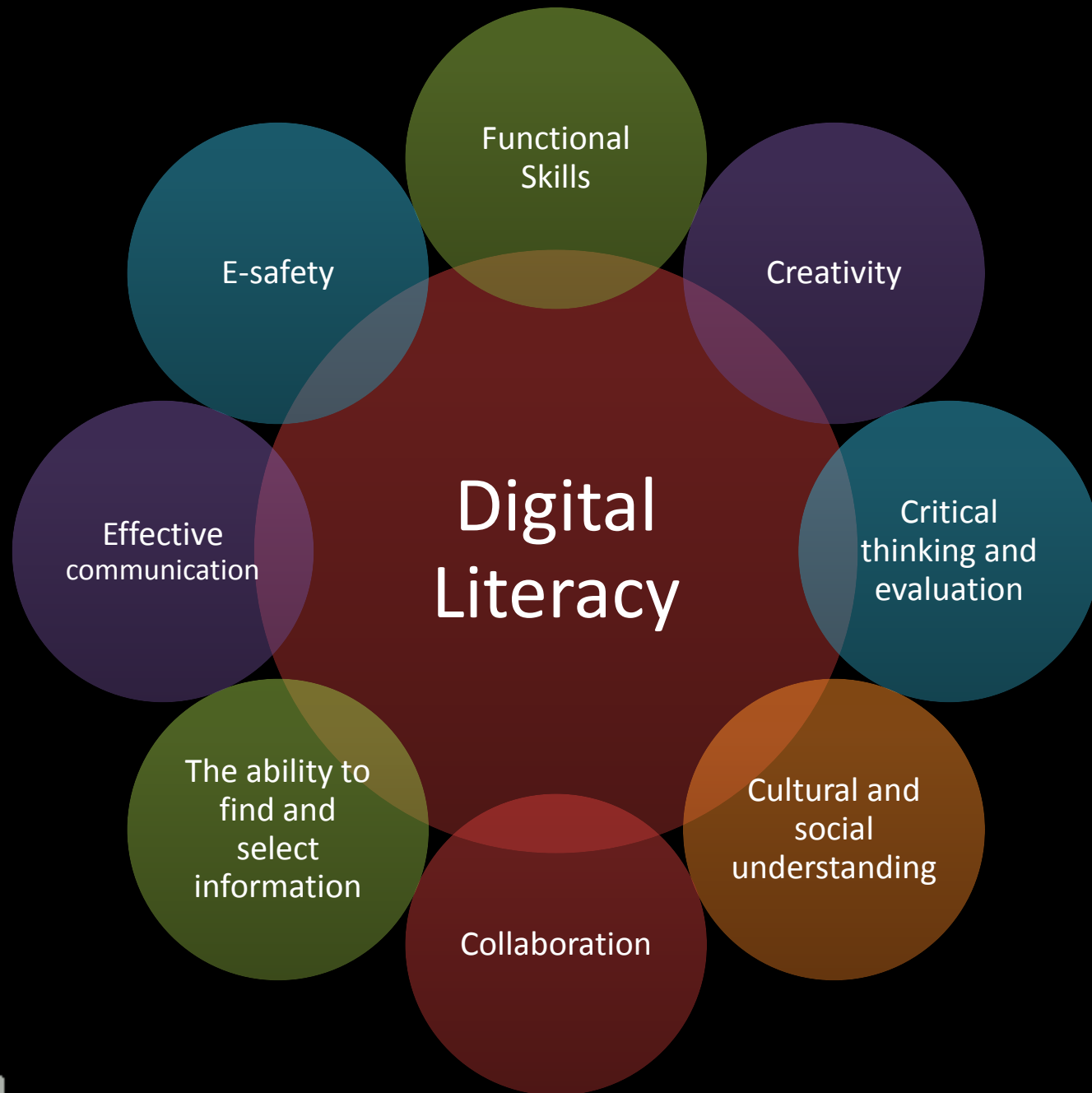
1. How do we build a “social machine” to better observe the workings of government?
2. How can this Government Web Observatory better inform the creation of public policy?
3. What are some of the key challenges which governments will face as a result of being armed with a Web Observatory?

Building a Social Machine in order to observe the Social Machine” of government in action

Oh, ICYMI, this is how many people were discussing the data retention bill allowing govt to retain all your metadata
pic.twitter.com/q7jUIESWK4

← Reply ↻ Retweet ★ Favorite ... More







Clay Shirky

A revolution doesn't happen when a society adopts new tools,
it happens when a society adopts new behaviours

Is this the new emerging currency?



Is this the ultimate “social machine”?



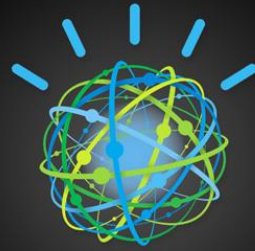
“I DON’T SEE DISABILITY.
I SEE BAD TECHNOLOGY.”

-hugh hess, bionic man

the
next
list



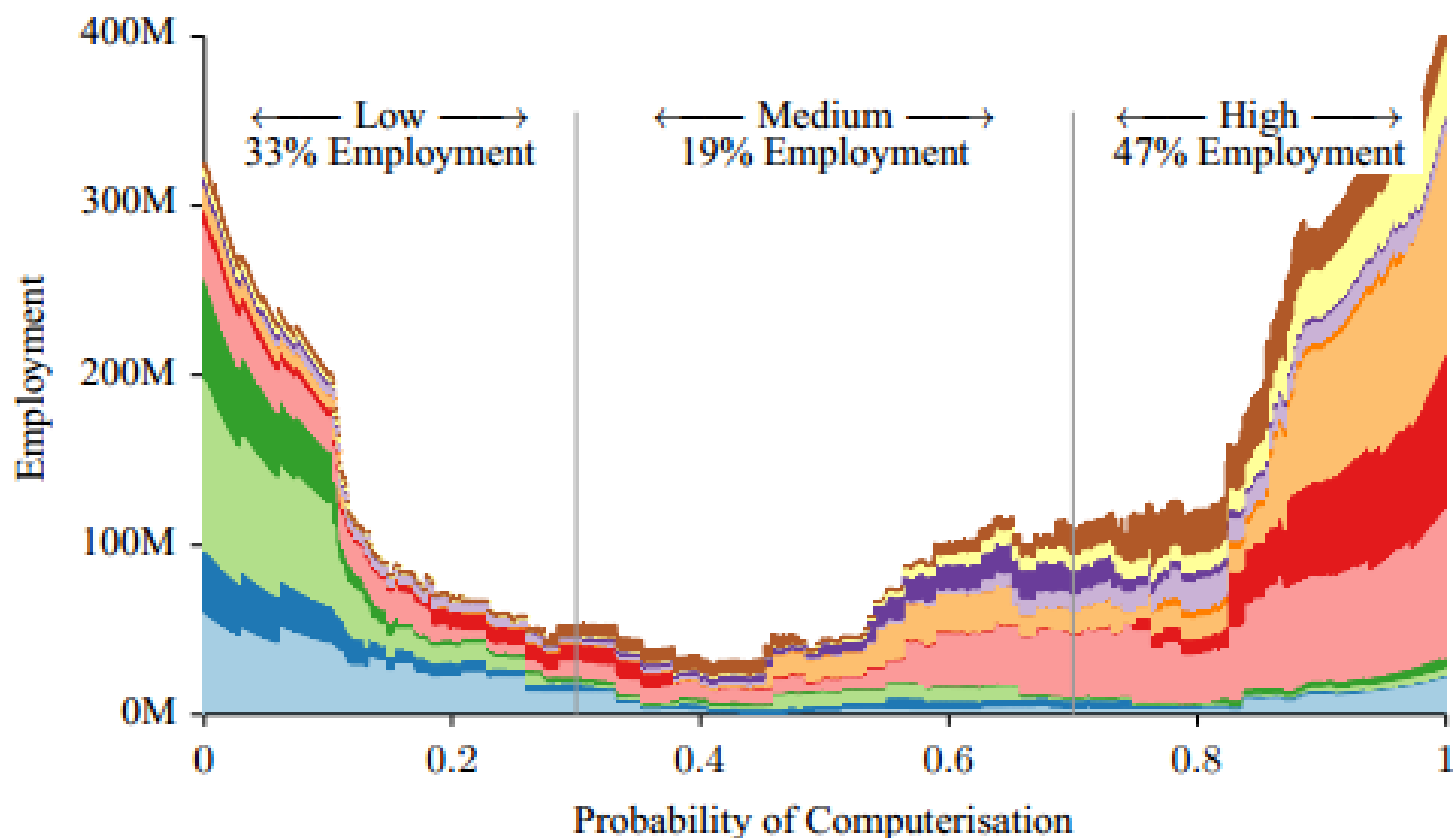
Or perhaps this?



***Watson
needs you.***



- Management, Business, and Financial
- Computer, Engineering, and Science
- Education, Legal, Community Service, Arts, and Media
- Healthcare Practitioners and Technical
- Service
- Sales and Related
- Office and Administrative Support
- Farming, Fishing, and Forestry
- Construction and Extraction
- Installation, Maintenance, and Repair
- Production
- Transportation and Material Moving



Jobs for
Watson?

A black and white close-up portrait of an elderly man, Eric Hoffer. He is wearing a dark cap with a button and round-rimmed glasses. His face is wrinkled, and he has a slight, thoughtful expression. The background is blurred, showing what appears to be an outdoor setting with some foliage.

Eric Hoffer

In a time of drastic change it is the learners who inherit the future.
The learned usually find themselves beautifully equipped to live in
a world that no longer exists

A driving future (or present)?

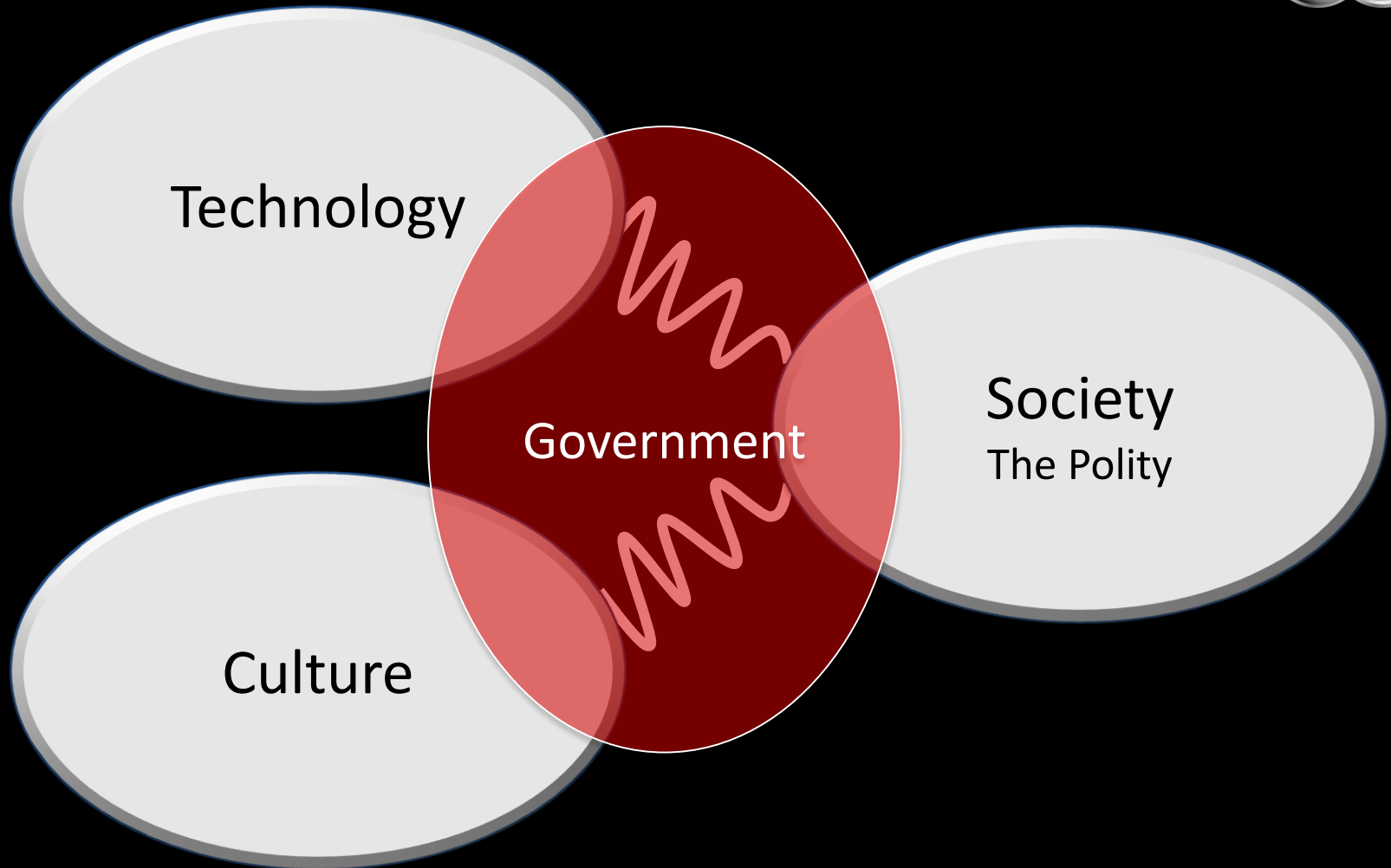


Rinspeed

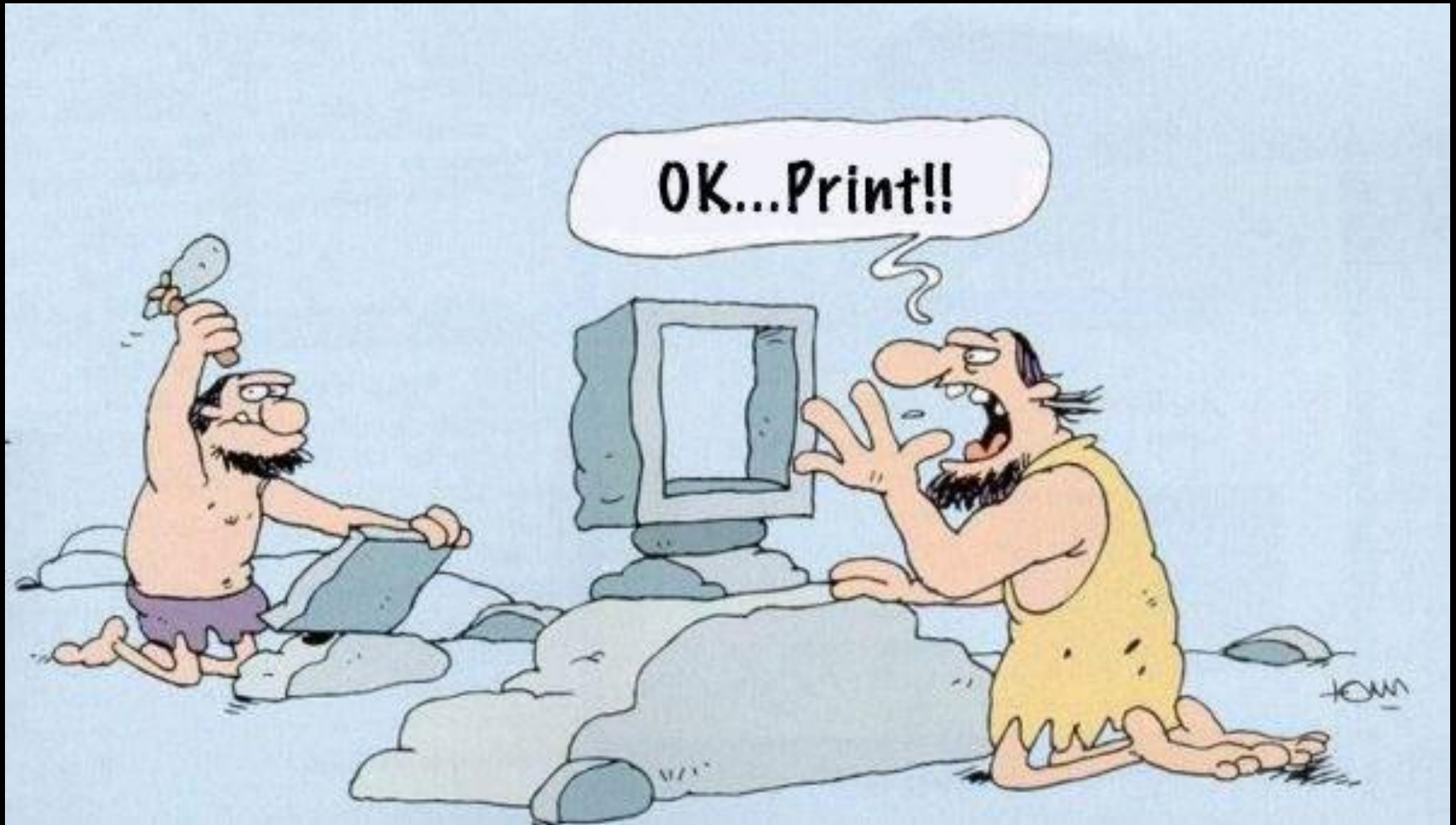


Are we heading to a “Wall-e” future?





We are still cavemen in the digital world





intersticia
analogue leadership in a digital world

Thank you

anni@intersticia.com

+61 413 626 737